

New Redgate Court Lodges

Flexible pitch fee options available



All prices include decking and alarm system.

Owners on Redgate also benefit with:

- Free use of the indoor and outdoor pools for 10 people
- Free use of the gymnasium for 2 people.
- Access throughout the summer season to our quality entertainment in the club complex
- 10% discount on food and drink in the club complex, the country club and Heacham Manor Hotel.
- Free use of the 9 hole golf course for 2 people and discount on the 18 hole course.

Summer Sale Now On

Stately, Arundel - 48 x 20 x 3 Bed

2012 Model

Pitch RG25

Price: £156,000

Now £141,000

C/H, D/G. Front patio doors. Open plan Kitchen/Lounge/Dining area. Lodge is fully furnished. Shag pile carpet & natural wooden blinds fitted throughout. Wooden floor in the kitchen/diner & free standing oak furniture. Feature kitchen doors in Plum. Bathroom has bath & shower over. Master bedroom has a walk-in wardrobe & en suite shower room. 2nd is a twin room with a walk-in wardrobe. 3rd Bedroom is also a twin room. Price includes a large decking and alarm system.



SEARLES LEISURE GROUP



Wessex , Classic/Sanctuary – 45 x 20 x 3 Bed

2012 Model

Pitch RG33

Price: £157,000

Now £149,000

C/D D/G Patio doors. Open plan Kitchen/Lounge/Dining area. Fully furnished. Feature fireplace. Kitchen has a gas hob & electric grill/oven, integrated fridge/freezer, dishwasher & breakfast bar. Utility room with washer/dryer, sink & airing cupboard. Large coat cupboard Bathroom has a bath with shower over, toilet & basin. Master bedroom has an en-suite shower room. 2nd & 3rd bedrooms have twin beds. Price includes a large decking and alarm system.



SEARLES LEISURE GROUP



Wessex Summer House – 44 x 20 x 3 Bed

2012 Model

Pitch RG22

Price: £162,000

Now £153,000

C/H, D/G Patio doors. Open plan Kitchen/Lounge/Dining area. Vaulted ceiling and exposed wooden beams. Fully furnished. Kitchen has a gas hob & electric grill/oven, integrated fridge/freezer & dishwasher. Bathroom has a shower, toilet & basin. Master bedroom has a feature end en suite bathroom with a bath, shower & basin and separate toilet. 2nd & 3rd bedrooms have twin beds. Price includes a large decking and alarm system.



Omar, Roof Terrace - 42 x 20 x 2 Bed 2012 Model

C/H, D/G. 2x patio doors with side spiral staircase to a roof terrace with glass balustrade. Open plan Kitchen/lounge/dining area. Fully furnished. Corner sofa & armchair, coffee table & electric fire Integrated fridge/freezer & dishwasher, gas hob with electric oven/grill & extractor. Utility room with washer/dryer & sink. Bathroom has shower, toilet & basin. Master bedroom has a walk through wardrobe to the en-suite bathroom with shower head over. PVC front side & rear decking.



Wessex , Classic/Freedom – 40 x 20 x 2 Bed, 2012 Model

Central Heating, Double Glazing. Patio Doors. Open plan Kitchen/Lounge/Dining area. Fully furnished. Kitchen has gas hob & electric grill/oven with extractor hood, integrated Fridge/freezer, dishwasher & a breakfast bar. Master bedroom has an en-suite shower room. 2nd bedroom has twin beds. Price includes a large decking and alarm system.



Pitch RG21

Price: £165,000

Now £155,000



Showground Price: £132,000

Now £125,000



Pre Owned Lodges on Redgate Court
Flexible pitch fee options available



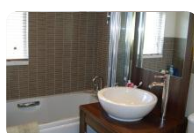
Owners on Redgate also benefit with:

- Free use of the indoor and outdoor pools for 10 people
- Free use of the gymnasium for 2 people.
- Access throughout the summer season to our quality entertainment in the club complex
- 10% discount on food and drink in the club complex, the country club and Heacham Manor Hotel.
- Free use of the 9 hole golf course for 2 people and discount on the 18 hole course.

Omar Kingfisher - 48 x 20 x 4 Bed 2008 Model Pitch RG15

Price: £149,995

SELLING ON BEHALF OF OWNER-D/G,C/H Front row overlooking the golf course. Open plan kitchen, lounge, dining area. 2 x 3 seater sofas & 1 armchair, dining table with 8 chairs. Kitchen with gas hob /electric oven, washer/dryer, dishwasher & fridge/freezer. Bathroom with bath & shower, toilet & basin. Master bedroom – 4ft 6” bed with en-suite shower, toilet & basin. The 2nd, 3rd & 4th bedrooms are twins, all with ample storage. Large decking area, alarm , 2 storage boxes.



Advent, Opus - 43 x 20 x 3 Bed

2007 Model

Pitch RG03

Price: £139,990

SELLING ON BEHALF OF OWNER - C/H, D/G Front row overlooking the Golf Course. Patio doors. fully furnished. Open plan Kitchen/ Lounge/ Dining area. Leather 3 piece suite, coffee tables. Gas hob with electric grill/oven, integrated microwave, dishwasher, fridge/freezer. Washer & dryer in utility room. Shower room with toilet & basin. Master Bedroom has en-suite bath & shower over. 2nd bedroom is twin size with a single bed and 3rd is a single. Sky dish/TVs included. Alarm & Wifi aerial



Omar Kingfisher - 45 x 20 x 3 Bed

2008 Model

Pitch RG36

Price: £135,000

SELLING ON BEHALF OF OWNER -D/G,C/H Open plan living/dining/kitchen area. 2 sofa's & 2 matching arm chairs. Dining table with 6 chairs and matching coffee table. Wall mounted electric fire. Kitchen with integrated fridge/freezer & dishwasher, built in electric oven/grill and gas hob. Main bathroom with shower over bath, toilet and basin. Master bedroom double with walk in wardrobe and en suite corner shower, toilet & basin. Bedrooms 2 & 3 has twin beds. Large decking. Alarm & Wifi aerial.



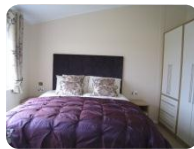
Omar Kingfisher - 45 x 20 x 3 bed

2010 Model

Pitch RG28

Price: £130,000

C/H, D/G. Front patio doors. Open plan Kitchen/Lounge/Dining area. Modern 3 seater sofa & 2 single armchairs & coffee table. Dining table & 6 chairs. Kitchen units are ivory doors with intergrated fridge/freezer, dishwasher & washing machine, electric cooker with gas hob. Main bathroom has bath with shower over, toilet&basin. Master bedroom has 5ft bed & en-suite shower, toilet & basin. 2nd & 3rd bedrooms have 3ft tein beds. TV points in all bedrooms. Large south facing wooden decking.



Willerby Boston - 40 x 20 x 2 bed

2010 Model

Pitch RG83

Price: £129,000

SELLING ON BEHALF OF OWNER D/G, C/H Open plan Kitchen/ Lounge/Dining area. Twin patio doors onto large decking over-looking the golf course 1 leather sofa, large kitchen area with built in eye level oven/grill/microwave. Separate hob. Washing machine & dishwasher. Breakfast bar with 2 stools. Master bedroom has king size bed, walk in wardrobe & en-suite shower, toilet & basin. 2nd bedroom has twin beds with walk in wardrobe. Bathroom, bath with shower over, toilet and basin. Storage box and Ramtech alarm.



Stately Lakewood - 45 x 20 x 3 Bed 2008 Model Pitch RG34

Price: £124,500

SELLING ON BEHALF OF OWNER C/H, D/G. Entrance hall with the boiler /storage cupboard. Open plan layout. Fully furnished. 3 piece suite & coffee table. Slide patio door. Electric fire with TV above. Kitchen has integrated dishwasher, washing machine, fridge & freezer. Gas hob with separate grill/oven with stainless steel hood. Bath with shower over. Master bedroom has a large walk in wardrobe & en-suite shower room. 2nd & 3rd bedrooms have twin beds. Wooden decking.



SEARLES LEISURE GROUP



Pre-owned lodges on Fairway Court

Flexible pitch fee options available

Owners on Fairway also benefit with:

- Free use of the indoor and outdoor pools for 10 people
- Free use of the gymnasium for 2 people.
- Access throughout the summer season to our quality entertainment in the club complex
- 10% discount on food and drink in the club complex, the country club and Heacham Manor Hotel.
- Free use of the 9 hole golf course for 2 people and discount on the 18 hole course.



Omar Kingfisher - 45 x 20 x 4 Bed 2003 Model Pitch: FC01

Price: £98,995

SELLING ON BEHALF OF OWNER **New Price** C/H, D/G. Front patio doors, three piece suite. Kitchen – Integrated fridge /freezer, washing machine & dishwasher. 2 double bedrooms & 2 twins. Main bedroom - has en-suite shower & toilet. Bathroom - bath with shower & toilet, which links to bedroom 2 & hallway. External Light. Ramtech Alarm. 2 Storage boxes. Huge corner position with double sided pitch, Large Decking.

Unlimited life on site subject to condition



SEARLES LEISURE GROUP



Omar Kingfisher - 45 x 20 x 4 Bed 2001 Model Pitch: FC17

Price: £94,995

SELLING ON BEHALF OF OWNER D/G, C/H & extra insulation. Kitchen- Integrated fridge/freezer. Lounge - front patio doors, three piece suite & Pine ceiling. Pine T & G in hallway to dado height. Bedrooms -2 double (4ft6")& 2 twin (3ft6"). Main Bathroom - bath with telephone handle shower & toilet. Master bedroom - has en-suite shower & toilet. Vaulted ceiling throughout. Large wooden decking with walkway External Light Ramtech Alarm.

Unlimited life on site subject



SEARLES LEISURE GROUP



Omar Kingfisher 45'x 20' 4 Bed**2005 Model****Pitch: FC23****Price: £95,000**

SELLING ON BEHALF OF OWNER D/G, C/H & extra insulation, lounge has three piece suite. Washing machine and integrated fridge freezer. Pine Tung and Groove in hallway to dado height, 2 double and 2 twin bedrooms, bath with telephone handle shower and toilet, which links to bedroom 2 & hallway, main bedroom has en-suite shower and toilet. Pine ceiling in lounge, vaulted throughout, External Light. Ramtech Alarm.

Unlimited life on site

**Omar Kingfisher - 40 x 20 x 3 Bed**

2002 Model
SEARLES LEISURE GROUP

Pitch: FC28**Price: £89,995**

SELLING ON BEHALF OF OWNER - C/H, D/G. Lounge/Dining area, with a chocolate leather 3 piece suite Dining table & 6 chairs. Kitchen is partitioned off, gas hob with separate oven /grill. Integrated fridge/freezer & dishwasher. Main bathroom - bath with shower over, toilet & basin. Master bedroom - 4ft6" bed with en-suite shower, toilet & basin. 2nd & 3rd twin (3ft6") bedrooms. Large decking. Ramtech Alarm.

Unlimited life on site subject to condition.



SEARLES LEISURE GROUP

Cosalt Matisse - 36 x 20 x 3 Bed**2002 Model****Pitch: FC35****Price: £87,500**

SELLING ON BEHALF OF OWNER D/G, C/H. Lounge/diner, 2 sofas (1 with bedsettee) + matching storage poufee, coffee table. Dining table & 6 chairs. Built in double oven/hob, Fridge/freezer & Washing machine. Large shower, toilet & basin & tiled floor. Double room has en-suite bath & shower over, toilet & basin & tiled floor. 2nd & 3rd bedrooms are twins. Fitted wardrobes. 2 front patio doors to decking, Storage box and patio furniture. Alarm. (Unlimited life on site subject to condition.)



SEARLES LEISURE GROUP

Wessex - Milbourne - 36 x 20 x 2 Bed 2002 Model**Pitch: FC41****Price: £77,995**

SELLING ON BEHALF OF OWNER - C/H, D/G. Open plan Kitchen/Lounge/Dining area. 3 Seater & 2 Seater leather sofas, Dining table and 6 chairs, electric coal effect fire. Kitchen has electric oven/grill, gas hob, fridge/freezer and washing machine. L shaped hall with 2 storage cupboards. Main bathroom has bath with shower over, toilet and basin. Master bedroom, double with en suite shower and toilet, 2nd bedroom is a twin. Large wooden decking & Ramtech alarm.

Unlimited life on site subject to condition



SEARLES LEISURE GROUP

Cosalt Matisse - 36 x 20 x 3 Bed**2003. Model****Pitch: FC20****Price: £74,995**

SELLING ON BEHALF OF OWNER - C/H. D/G. lounge has three piece suite, foot stool and coffee table. Table & six chairs. Range oven, free standing fridge freezer, space for dishwasher or washing machine, main bedroom with en-suite bath and toilet, twin room & bunk room, separate shower, toilet & basin. Vaulted ceiling in lounge, external lighting to Panaramic doors. Large wrap around wooden deck. Two storage boxes. Ramtech alarm.

Unlimited life on site subject to condition.

SEARLES LEISURE GROUP

**Cosalt Cezanne - 36 X 20 x 3 Bed****2001 Model****Pitch: FC13****Price: £73,995**

D/G, C/H, lounge has one two seater & one Three seate, Table and chairs, fridge freezer, microwave, intergrated washing machine and dishwasher, bath with overhead shower, toilet & basin. Master bedroom - 4ft 6" bed with en-suite shower and toilet. 2nd & 3^{rg} Bedrooms are twins. Pine ceiling, vaulted in the lounge, panoramic windows, large decking to the front and good side decking with Hot Tub or made back to deck. Alarm. Storage box.

Unlimited life on site subject to condition.

SEARLES LEISURE GROUP

**Tingdene Country Lodge - 36 x 20 x 3 Bed 2001 Model Pitch: FC40****Price: £69,995**

SELLING ON BEHALF OF OWNER - C/H, D/G Open plan kitchen/ lounge/dining. Patio doors with triple aspect windows. 2 leather sofas & chair. Dining table with fixed seating & 2 chairs. Built in oven, washing machine and fridge/freezer. Main bedroom - double with huge storage, en-suite shower, toilet & basin. 2nd bedroom is a single & 3RD bedroom has bunk beds. Bathroom, bath & shower over, toilet & basin. Wooden decking, storage box, Alarm. *Unlimited life on site subject to condition.*

Unlimited life on site subject to condition.

SEARLES LEISURE GROUP

**Wessex - Milbourne - 36 x 20 x 2 Bed 2003 Model****Pitch: FC03****Price: £64,995**

SELLING ON BEHALF OF OWNER - C/H, D/G. Open plan Kitchen/ Lounge/Dining area. Lounge has 2x2 seater sofas. Wooden matching coffee & dining table with 4 chairs. Gas Fire. Kitchen has Gas hob with electric oven, fridge/freezer, dishwasher & Breakfast Bar. Bathroom - bath with shower over, basin & toilet. Master bedroom - 4ft 6" & en-suite shower, basin & toilet. 2nd bedroom – twin. Large decking. Storage box & Ramtech Alarm. *Unlimited life on site subject to condition.*

Unlimited life on site subject to condition.

SEARLES LEISURE GROUP



Pre Owned Lodges on Courtyards

Flexible pitch fee options available



Owners on Courtyards also benefit with:

- Free use of the indoor and outdoor pools for 10 people
- Free use of the gymnasium for 2 people.
- Access throughout the summer season to our quality entertainment in the club complex
- 10% discount on food and drink in the club complex, the country club and Heacham Manor Hotel.
- Discounted use of the 9 hole golf and 18 hole golf courses.

Willerby New Hampshire - 40 x 16 x 3 Bed 2006 Model

SELLING ON BEHALF OF OWNER - D/G, C/H & extra insulation.

Open plan kitchen/lounge/dining. Front Patio doors. 2 x 2 seater sofas, coal effect fire, 32" TV, side unit & coffee table. Dining table & chairs. Kitchen has a large cooker, American style fridge/freezer & washing machine. Main Bathroom - shower, toilet & basin. Master bedroom has & en-suite shower, toilet & basin. 2nd & 3rd bedrooms are twins. PVC Decking with skirting & external lighting. *Unlimited life on site subject to condition.*



SEARLES LEISURE GROUP

Pitch SW27

Price: £57,495



Brentmere Leisure Lodge - 28 x 20 x 3 Bed 2005 Model

SELLING ON BEHALF OF OWNER - D/G, C/H & extra insulation.

Front Patio doors. 3 seater sofa & 2 chairs, electric fire, Dining table & 6 chairs. Integrated fridge freezer, washing machine, gas hob with electric grill/oven. Bathroom – Large shower, toilet & basin. Master bedroom- 4ft6" bed with plenty of wardrobes. 2nd bedroom –twins. 3rd Bedroom – 2ft6" single PVC decking, & skirting. Ramtech Alarm & Wifi Aerial. Includes lots of extras. *Unlimited life on site subject to condition.*



SEARLES LEISURE GROUP

Pitch MC08

Price: £54,995



Cosalt - Cezanne - 28 x 20 x 2 Bed

1990 Model

D/G. Open plan Kitchen/Lounge/Dining area. Gas cooker with separate grill & oven. Freestanding fridge/freezer. Dining table & 6 chairs, (lounge suite excluded) gas fire & electric heaters in main bedroom & hallway. Master bedroom - 4ft6" . 2nd bedroom – twin. Upgraded bathroom with shower. Pitched ceiling, cottage style with beams, external light wooden decking. *Unlimited life on site subject to condition.*



SEARLES LEISURE GROUP

Pitch HC04

Price: £24,995

